



UTL1426

Power MOSFET

N-CHANNEL ENHANCEMENT MODE FIELD EFFECT TRANSISTOR

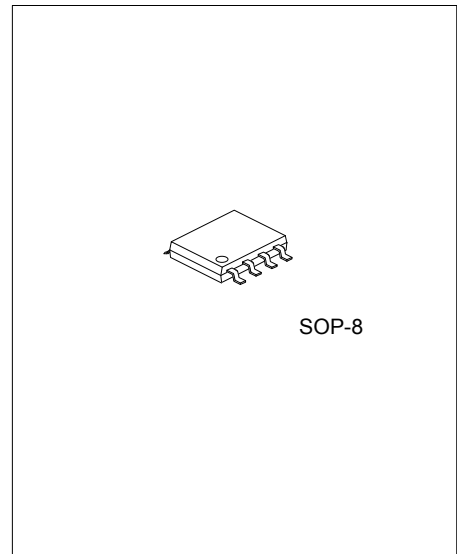
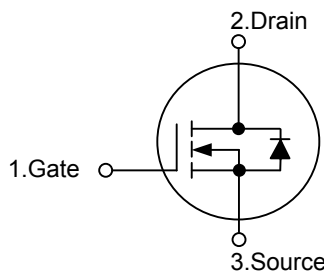
DESCRIPTION

The **UTL1426** uses UTC's advanced trench technology to provide excellent $R_{DS(ON)}$, low gate charge and operation with low gate voltages. This device is suitable for use as a load switch or in PWM applications.

FEATURES

- * $R_{DS(ON)} < 10.5 \text{ m}\Omega @ V_{GS}=10\text{V}$
- $R_{DS(ON)} < 12.5 \text{ m}\Omega @ V_{GS}=4.5\text{V}$
- * Low capacitance
- * Low gate charge
- * Fast switching capability
- * Avalanche energy specified

SYMBOL



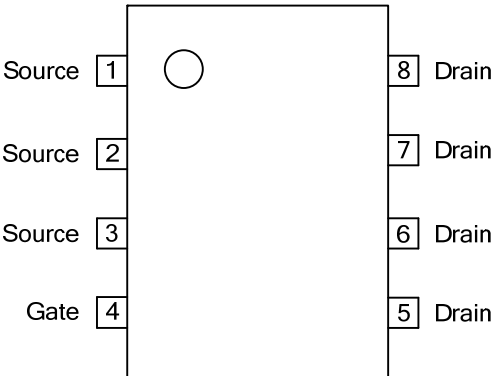
Lead-free: UTL1426L
 Halogen-free: UTL1426G

ORDERING INFORMATION

Ordering Number			Package	Packing
Normal	Lead Free Plating	Halogen Free		
UTL1426-S08-R	UTL1426L-S08-R	UTL1426G-S08-R	SOP-8	Tape Reel

UTL1426L-S08-R └── (1)Packing Type └── (2)Package Type └── (3)Lead Plating	(1) R: Tape Reel (2) S08: SOP-8 (3) G: Halogen Free, L: Lead Free, Blank: Pb/Sn
---	---

■ PIN CONFIGURATION



■ ABSOLUTE MAXIMUM RATINGS (T_a=25°C, unless otherwise specified)

PARAMETER	SYMBOL	RATINGS	UNIT
Drain-Source Voltage	V _{DSS}	30	V
Gate-Source Voltage	V _{GSS}	±12	V
Continuous Drain Current	I _D	46	A
Pulsed Drain Current	I _{DM}	120	A
Avalanche Current	I _{AR}	35	A
Repetitive avalanche energy L=0.3mH	E _{AR}	184	mJ
Power Dissipation	P _D	43	W
Junction Temperature	T _J	+175	°C
Storage Temperature	T _{STG}	-55 ~ +175	°C

Note: 1. Absolute maximum ratings are those values beyond which the device could be permanently damaged. Absolute maximum ratings are stress ratings only and functional device operation is not implied.
 2. Pulse width limited by T_{J(MAX)}

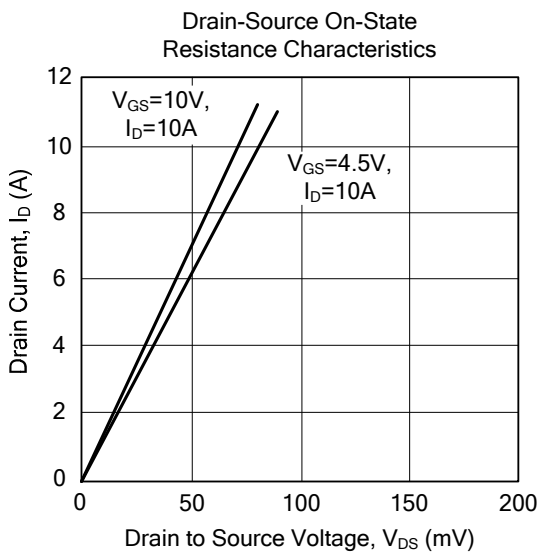
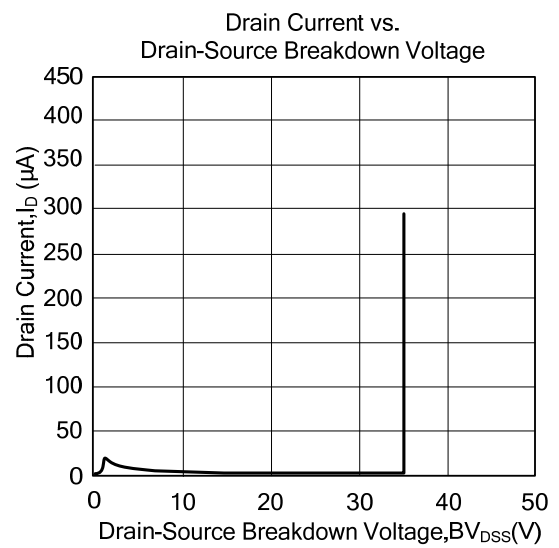
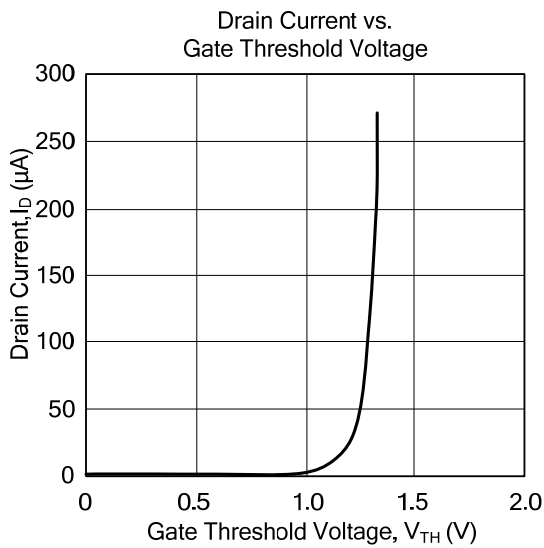
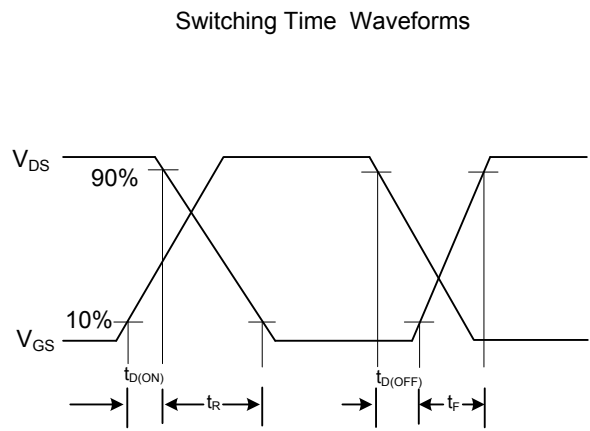
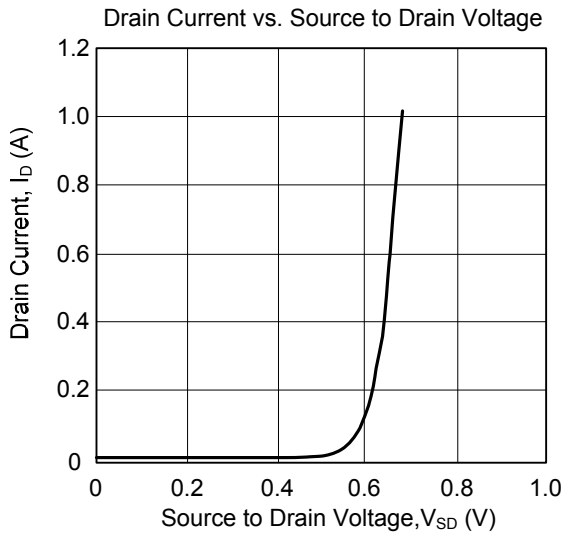
■ THERMAL DATA

PARAMETER	SYMBOL	MIN	TYP	MAX	UNIT
Junction-to-Ambient	θ _{JA}		53	64	°C/W
Junction-to-Case	θ _{JC}		2.4	3.5	

■ ELECTRICAL CHARACTERISTICS (T_J=25°C, unless otherwise specified)

PARAMETER	SYMBOL	TEST CONDITIONS	MIN	TYP	MAX	UNIT	
OFF CHARACTERISTICS							
Drain-Source Breakdown Voltage	BV _{DSS}	V _{GS} =0V, I _D =250μA	30			V	
Zero Gate Voltage Drain Current	I _{DSS}	V _{DS} =24V, V _{GS} =0V			1	μA	
Gate-Body Leakage Current	I _{GSS}	V _{DS} =0V, V _{GS} =±12V			0.1	μA	
ON CHARACTERISTICS							
Gate Threshold Voltage	V _{GS(TH)}	V _{DS} =V _{GS} , I _D =250μA	1	1.55	2.5	V	
On State Drain Current	I _{D(ON)}	V _{DS} =5V, V _{GS} =10V	120			A	
Static Drain-Source On-Resistance	R _{Ds(ON)}	V _{GS} =10V, I _D =20A		8.5	10.5	mΩ	
		V _{GS} =4.5V, I _D =20A		10.2	12.5		
DYNAMIC PARAMETERS							
Input Capacitance	C _{ISS}	V _{DS} =15V, V _{GS} =0V, f=1MHz		1210	1452	pF	
Output Capacitance	C _{OSS}			330		pF	
Reverse Transfer Capacitance	C _{RSS}			85		pF	
SWITCHING PARAMETERS							
Turn-ON Delay Time	t _{D(ON)}	V _{GS} =10V, V _{DS} =15V, R _L =0.75Ω, R _{GEN} =3Ω		10		ns	
Turn-ON Rise Time	t _R			6.3		ns	
Turn-OFF Delay Time	t _{D(OFF)}			21		ns	
Turn-OFF Fall-Time	t _F			2.8		ns	
Total Gate Charge	10V	V _{DS} =15V, V _{GS} =10V, I _D =20A	Q _G	22	28	nC	
	4.5V			10		nC	
Gate Source Charge	Q _{GS}		3.7		nC		
Gate Drain Charge	Q _{GD}		2.7		nC		
SOURCE- DRAIN DIODE RATINGS AND CHARACTERISTICS							
Diode Forward Voltage	V _{SD}		I _S =1A, V _{GS} =0V		0.73	1.0	V
Maximum Body-Diode Continuous Current	I _S				46	A	
Body Diode Reverse Recovery Time	t _{RR}	I _F =20A, dI/dt=100A/μs		36	45	ns	
Body Diode Reverse Recovery Charge	Q _{RR}		47		nC		

TYPICAL CHARACTERISTICS



UTC assumes no responsibility for equipment failures that result from using products at values that exceed, even momentarily, rated values (such as maximum ratings, operating condition ranges, or other parameters) listed in products specifications of any and all UTC products described or contained herein. UTC products are not designed for use in life support appliances, devices or systems where malfunction of these products can be reasonably expected to result in personal injury. Reproduction in whole or in part is prohibited without the prior written consent of the copyright owner. The information presented in this document does not form part of any quotation or contract, is believed to be accurate and reliable and may be changed without notice.