



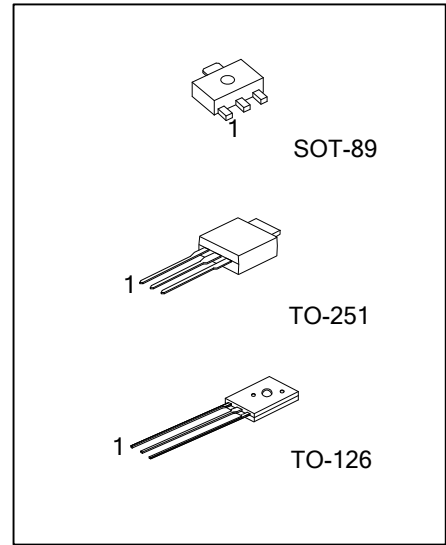
2SB824

PNP SILICON TRANSISTOR

PNP PLANAR SILICON TRANSISTOR

■ FEATURES

* Low collector-to-emitter saturation voltage:
 $V_{CE(SAT)} = -0.4V \text{ max} / I_C = -3A, I_B = -0.3A$



■ ORDERING INFORMATION

Ordering Number		Package	Pin Assignment			Packing
Lead Free	Halogen Free		1	2	3	
-	2SB824G-x-AB3-R	SOT-89	B	C	E	Tape Reel
2SB824L-x-T60-K	2SB824G-x-T60-K	TO-126	B	C	E	Bulk
2SB824L-x-TM3-T	2SB824G-x-TM3-T	TO-251	B	C	E	Tube

Note: Pin Assignment: B: Base C: Collector E: Emitter

<p>2SB824L-x-AB3-R</p> <p>(1) Packing Type (2) Package Type (3) Rank (4) Green Package</p>	<p>(1) K: Bulk, R: Tape Reel, T: Tube (2) T60: TO-126, AB3: SOT-89, TM3: TO-251 (3) x: refer to Classification of h_{FE1} (4) G: Halogen Free and Lead Free, L: Lead Free</p>
---	---

■ MARKING

PACKAGE	MARKING
SOT-89	<p>2SB824G → Data Code</p>
TO-126	<p>UTC 2SB824□ → Data Code L: Lead Free G: Halogen Free</p>
TO-251	<p>UTC 2SB824□ → L: Lead Free G: Halogen Free Data Code</p> <p>Lot Code ←</p>

■ ABSOLUTE MAXIMUM RATINGS ($T_A=25^{\circ}\text{C}$, unless otherwise specified)

PARAMETER		SYMBOL	RATINGS	UNIT
Collector to Base Voltage		V_{CBO}	-60	V
Collector to Emitter Voltage		V_{CEO}	-50	V
Emitter to Base Voltage		V_{EBO}	-6	V
Collector Current		I_C	-5	A
Collector Current (Pulse)		I_{CP}	-9	A
Collector Dissipation	SOT-89	P_C	0.5	W
	TO-126/ TO-251		1	
Junction Temperature		T_J	+150	$^{\circ}\text{C}$
Storage Temperature		T_{STG}	-40 ~ +150	$^{\circ}\text{C}$

Note: Absolute maximum ratings are those values beyond which the device could be permanently damaged. Absolute maximum ratings are stress ratings only and functional device operation is not implied.

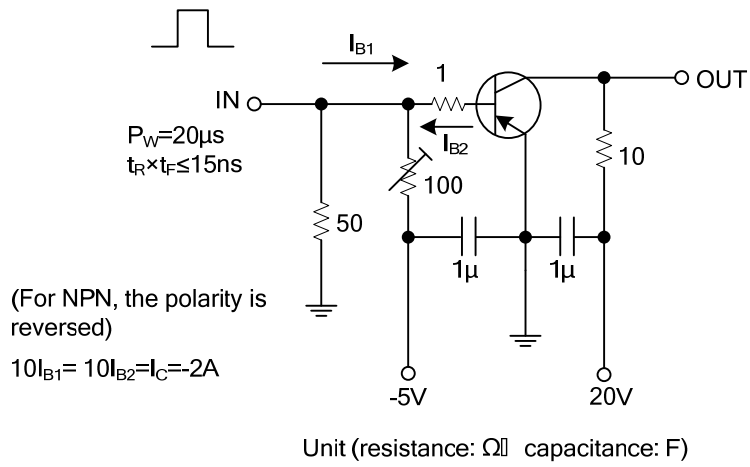
■ ELECTRICAL CHARACTERISTICS ($T_A=25^{\circ}\text{C}$, unless otherwise specified)

PARAMETER	SYMBOL	TEST CONDITIONS	MIN	TYP	MAX	UNIT
Collector-to-Base Breakdown Voltage	BV_{CBO}	$I_C = -1\text{mA}, I_E = 0$	-60			V
Collector-to-Emitter Breakdown Voltage	BV_{CEO}	$I_C = -1\text{mA}, R_{BE} = \infty$	-50			V
Emitter-to-Base Breakdown Voltage	BV_{EBO}	$I_C = 0, I_E = -1\text{mA}$	-6			V
Collector Cut-Off Current	I_{CBO}	$V_{CB} = -40\text{V}, I_E = 0$			-0.1	mA
Emitter Cut-Off Current	I_{EBO}	$V_{EB} = -4\text{V}, I_C = 0$			-0.1	mA
DC Current Gain	h_{FE1}	$V_{CE} = -2\text{V}, I_C = -1\text{A}$	70		360	
	h_{FE2}	$V_{CE} = -2\text{V}, I_C = -3\text{A}$	30			
Gain Bandwidth Product	f_T	$V_{CE} = -5\text{V}, I_C = -1\text{A}$		30		MHZ
Output Capacitance	C_{OB}	$V_{CB} = -10\text{V}, f = 1\text{MHz}$		100		pF
Collector-to-Emitter Saturation Voltage	$V_{CE(SAT)}$	$I_C = -3\text{A}, I_B = -0.3\text{A}$			-0.4	V
Turn-ON Time	t_{ON}	See specified test circuit		0.1		μs
Storage Time	t_{STG}	See specified test circuit		1.4		μs
Fall Time	t_F	See specified test circuit		0.2		μs

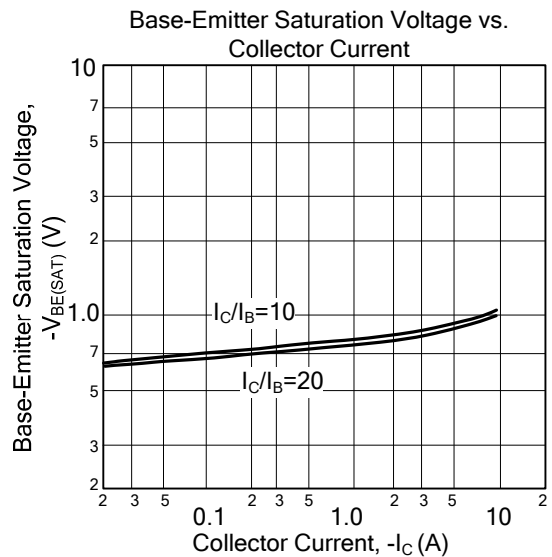
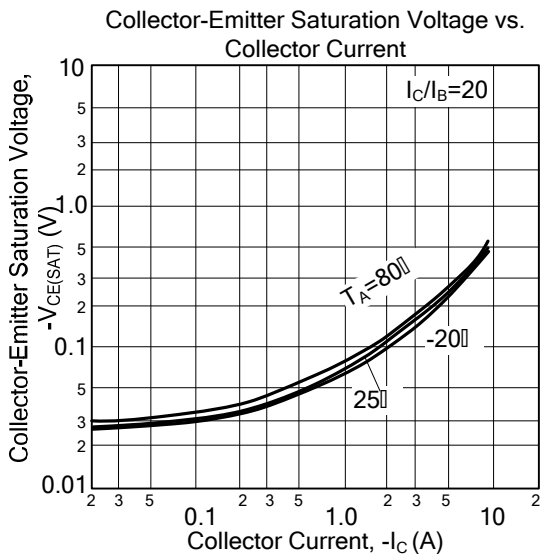
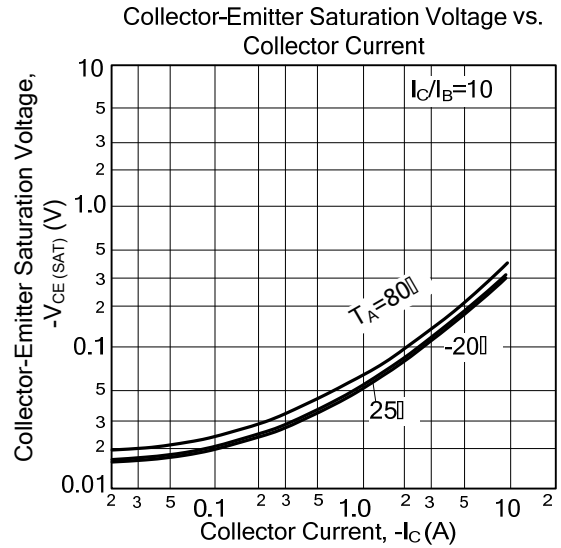
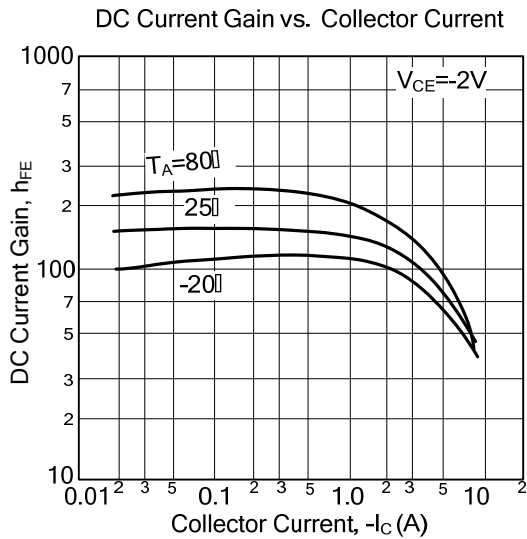
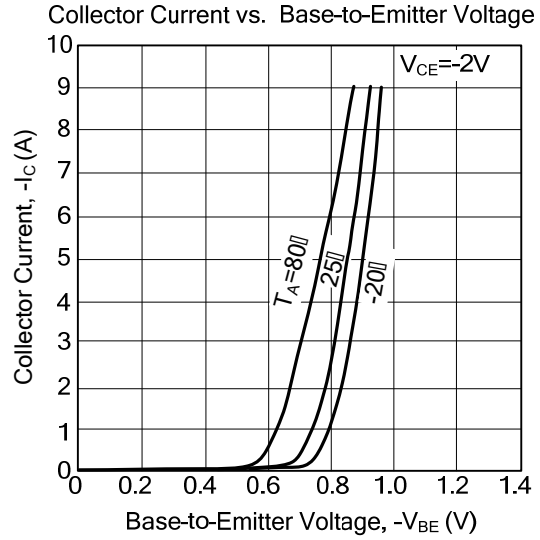
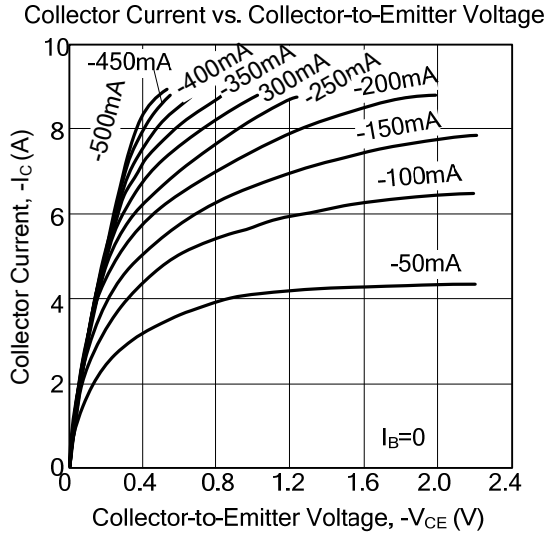
■ CLASSIFICATION of h_{FE1}

RANK	Q	R	S
RANGE	70-140	100-200	180-360

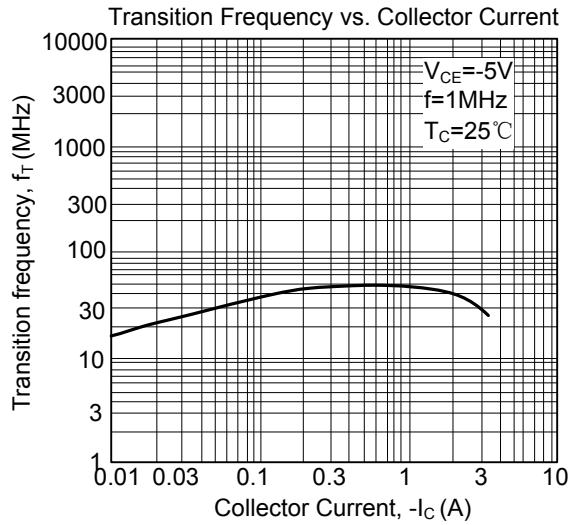
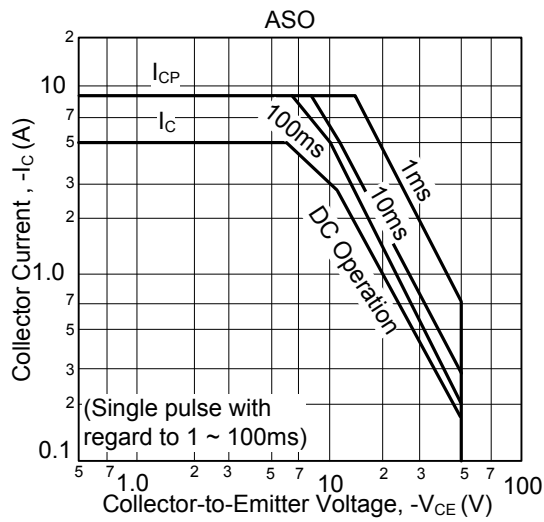
■ SWITCHING TIME TEST CIRCUIT



TYPICAL CHARACTERISTICS



■ TYPICAL CHARACTERISTICS(Cont.)



UTC assumes no responsibility for equipment failures that result from using products at values that exceed, even momentarily, rated values (such as maximum ratings, operating condition ranges, or other parameters) listed in products specifications of any and all UTC products described or contained herein. UTC products are not designed for use in life support appliances, devices or systems where malfunction of these products can be reasonably expected to result in personal injury. Reproduction in whole or in part is prohibited without the prior written consent of the copyright owner. The information presented in this document does not form part of any quotation or contract, is believed to be accurate and reliable and may be changed without notice.