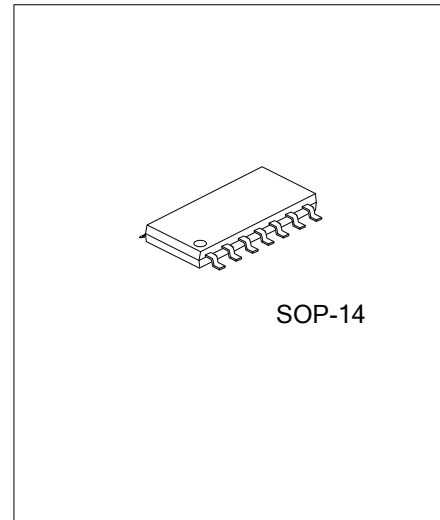




U74AHC126

CMOS IC

QUADRUPLE BUS BUFFER GATES WITH 3-STATE OUTPUTS



DESCRIPTION

The **U74HC126** is a quadruple bus buffer gate with 3-state outputs and 4 channels.

FEATURES

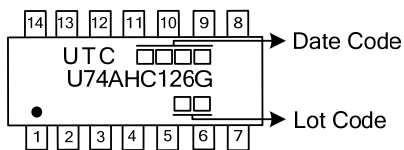
- * Operate from 2V to 5.5V
- * Max t_{pd} of 5.5ns at 5 V(CL=15pF)
- * Typical V_{IH} < 2.1V at V_{CC} =3V, T_a =25°C
- * Typical V_{IL} > 0.9V at V_{CC} =3V, T_a =25°C

ORDERING INFORMATION

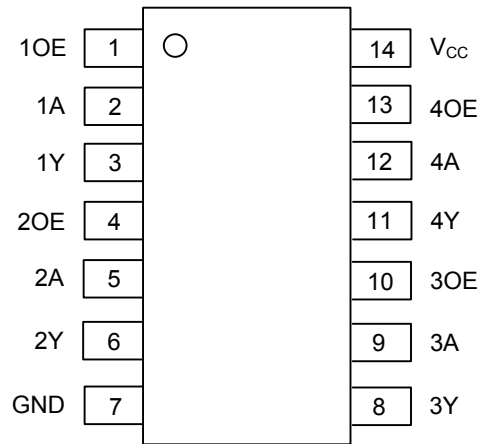
Ordering Number	Package	Packing
U74AHC126G-S14-R	SOP-14	Tape Reel

<p>U74AHC126G-S14-R</p> <ul style="list-style-type: none"> (1) Packing Type (2) Package Type (3) Green Package 	<ul style="list-style-type: none"> (1) R: Tape Reel (2) S14: SOP-14 (3) G: Halogen Free and Lead Free
---	--

MARKING



■ PIN CONFIGURATION

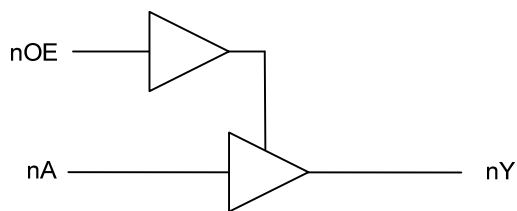


■ FUNCTION TABLE

INPUTS(OE)	INPUTS(A)	OUTPUT(Y)
H	L	L
H	H	H
L	X	Z

Note: H: HIGH voltage level L: LOW voltage level Z: high impedance X: don't care

■ LOGIC DIAGRAM



■ ABSOLUTE MAXIMUM RATING

PARAMETER	SYMBOL	RATINGS	UNIT
Supply Voltage	V_{CC}	-0.5 ~ 7	V
Input Voltage	V_{IN}	-0.5 ~ 7	V
Output Voltage	V_{OUT}	-0.5 ~ $V_{CC} + 0.5$	V
V_{CC} or GND Current	I_{CC}	±50	mA
Output Current	I_{OUT}	±25	mA
Input Clamp Current	I_{IK}	-20	mA
Output Clamp Current	I_{OK}	±20	mA
Operating Temperature	T_{OPR}	-40 ~ + 85	°C
Storage Temperature	T_{STG}	-65 ~ + 150	°C

Note: Absolute maximum ratings are those values beyond which the device could be permanently damaged.
 Absolute maximum ratings are stress ratings only and functional device operation is not implied.

■ THERMAL DATA

PARAMETER	SYMBOL	MIN	TYP	MAX	UNIT
Junction to Ambient	θ_{JA}			76	°C/W

■ RECOMMENDED OPERATING CONDITIONS

PARAMETER	SYMBOL	TEST CONDITIONS	MIN	TYP	MAX	UNIT
Supply Voltage	V_{CC}		2		5.5	V
High-Level Input Voltage	V_{IH}	$V_{CC}=2V$	1.5			V
		$V_{CC}=3V$	2.1			
		$V_{CC}=5.5V$	3.85			
Low-Level Input Voltage	V_{IL}	$V_{CC}=2V$			0.5	V
		$V_{CC}=3V$			0.9	
		$V_{CC}=5.5V$			1.65	
Input Voltage	V_{IN}		0		5.5	V
Output Voltage	V_{OUT}		0		V_{CC}	V
High-Level Input Current	I_{OH}	$V_{CC}=2V$			-50	μA
		$V_{CC}=3.3V \pm 0.3V$			-4	mA
		$V_{CC}=5V \pm 0.5V$			-8	mA
Low-Level Input Current	I_{OL}	$V_{CC}=2V$			50	μA
		$V_{CC}=3.3V \pm 0.3V$			4	mA
		$V_{CC}=5V \pm 0.5V$			8	mA
Input Transition Rise or Fall rate	tR, tF	$V_{CC}=3.3V \pm 0.3V$			100	ns/V
		$V_{CC}=5V \pm 0.5V$			20	

■ ELECTRICAL CHARACTERISTICS ($T_A=25^\circ C$)

PARAMETER	SYMBOL	TEST CONDITIONS	MIN	TYP	MAX	UNIT
Output Voltage High-Level	V_{OH}	$V_{CC}=2V, I_{OH}=-50\mu A$	1.9	2		V
		$V_{CC}=3V, I_{OH}=-50\mu A$	2.9	3		
		$V_{CC}=4.5V, I_{OH}=-50\mu A$	4.4	4.5		
		$V_{CC}=3V, I_{OH}=-4mA$	2.58			
		$V_{CC}=4.5V, I_{OH}=-8mA$	3.94			
Output Voltage Low-Level	V_{OL}	$V_{CC}=2V, I_{OL}=50\mu A$			0.1	V
		$V_{CC}=3V, I_{OL}=50\mu A$			0.1	
		$V_{CC}=4.5V, I_{OL}=50\mu A$			0.1	
		$V_{CC}=3V, I_{OL}=4mA$			0.36	
		$V_{CC}=4.5V, I_{OL}=8mA$			0.36	
Input Leakage Current	$I_{(LEAK)}$	$V_{CC}=0V \sim 5.5V, V_{IN}=V_{CC}$ or GND			±100	nA
Output Off-State Current	I_{OZ}	$V_{CC}=5.5V, V_{OUT}=V_{CC}$ or GND			±250	nA
Quiescent Supply Current	I_Q	$V_{CC}=5.5V, V_{IN}=V_{CC}$ or GND, $I_{OUT}=0$			4	μA
Input Capacitance	C_I	$V_{CC}=5V$		4	10	pF

■ SWITCHING CHARACTERISTICS($T_A=25^{\circ}\text{C}$, $C_L=15\text{pF}$)

PARAMETER	SYMBOL	TEST CONDITIONS	MIN	TYP	MAX	UNIT
Propagation Delay From Input A to Output Y	t_{PLH}/t_{PHL}	$V_{CC}=3.3\text{V}\pm 0.3\text{V}$	1		9.5	ns
		$V_{CC}=5\text{V}\pm 0.5\text{V}$	1		6.5	
Propagation Delay From Input OE to Output Y	t_{PZH}/t_{PZL}	$V_{CC}=3.3\text{V}\pm 0.3\text{V}$	1		9.5	ns
		$V_{CC}=5\text{V}\pm 0.5\text{V}$	1		6	
Propagation Delay From Input OE to Output Y	t_{PHZ}/t_{PLZ}	$V_{CC}=3.3\text{V}\pm 0.3\text{V}$	1		11.5	ns
		$V_{CC}=5\text{V}\pm 0.5\text{V}$	1		8	

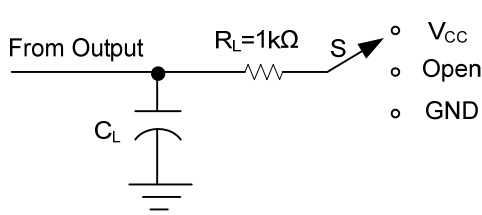
■ SWITCHING CHARACTERISTICS($T_A=25^{\circ}\text{C}$, $C_L=50\text{pF}$)

PARAMETER	SYMBOL	TEST CONDITIONS	MIN	TYP	MAX	UNIT
Propagation Delay From Input A to Output Y	t_{PLH}/t_{PHL}	$V_{CC}=3.3\text{V}\pm 0.3\text{V}$	1		13	ns
		$V_{CC}=5\text{V}\pm 0.5\text{V}$	1		8.5	
Propagation Delay From Input OE to Output Y	t_{PZH}/t_{PZL}	$V_{CC}=3.3\text{V}\pm 0.3\text{V}$	1		13	ns
		$V_{CC}=5\text{V}\pm 0.5\text{V}$	1		8	
Propagation Delay From Input OE to Output Y	t_{PHZ}/t_{PLZ}	$V_{CC}=3.3\text{V}\pm 0.3\text{V}$	1		15	ns
		$V_{CC}=5\text{V}\pm 0.5\text{V}$	1		10	

■ OPERATING CHARACTERISTICS($T_A=25^{\circ}\text{C}$)

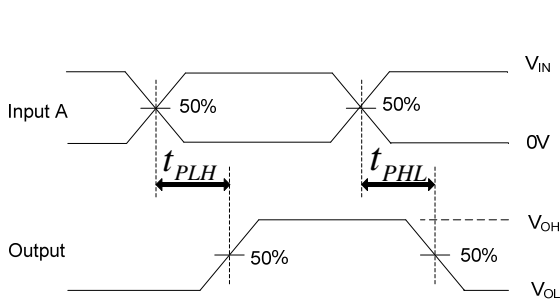
PARAMETER	SYMBOL	TEST CONDITIONS	MIN	TYP	MAX	UNIT
Power Dissipation Capacitance	Cpd	No Load, $f=1\text{MHz}$		14		pF

■ TEST CIRCUIT AND WAVEFORMS

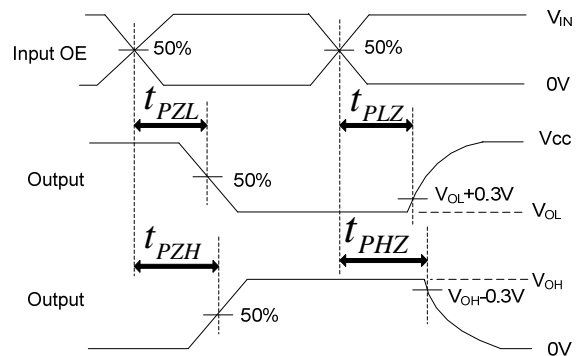


TEST CIRCUIT

TEST	S
t_{PLH}/t_{PHL}	Open
t_{PHZ}/t_{PZH}	GND
t_{PLZ}/t_{PZL}	V_{CC}



PROPAGATION DELAY TIMES



ENABLE AND DISABLE TIMES

Note: C_L includes probe and jig capacitance.

All input pulses are supplied by generators having the following characteristics: PRR ≤ 1 MHz, $Z_o = 50\Omega$, $t_r \leq 3$ ns, $t_f \leq 3$ ns.

UTC assumes no responsibility for equipment failures that result from using products at values that exceed, even momentarily, rated values (such as maximum ratings, operating condition ranges, or other parameters) listed in products specifications of any and all UTC products described or contained herein. UTC products are not designed for use in life support appliances, devices or systems where malfunction of these products can be reasonably expected to result in personal injury. Reproduction in whole or in part is prohibited without the prior written consent of the copyright owner. The information presented in this document does not form part of any quotation or contract, is believed to be accurate and reliable and may be changed without notice.